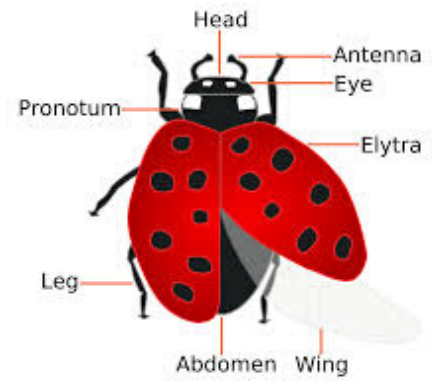


Different types of insect

- There are 27000 types of insect in the UK
- Insects have what we call an exoskeleton or a hard, shell-like covering on the outside of the body
- Insects have three main body parts: head, thorax, and abdomen
- Insects have a pair of antennae on top of their heads
- Insects have three pairs of legs
- Insects usually have two pairs of wings



Butterflies

Two pairs of large wings covered in tiny scales
Feed through coiled proboscis
Sit with wings closed
Long, thin antenna
Brightly coloured
Day flying

There are 59 types of butterfly in the UK



Moths

Two pairs of large wings covered in tiny scales
Feed through coiled proboscis
Sit with wings open
Short feathery antenna
Dull coloured
Night flying



There are 2500 types of moth in the UK



Caterpillars

Caterpillars are immature butterflies and moths
Have five or fewer pairs of 'legs'

There are 2559 types of caterpillar in the UK



There are 500 types of sawfly in the UK

Larvae of Sawflies look similar to caterpillars, but they have nine or more pairs of 'legs'
Adult Sawflies look similar to wasps

Sawflies



Beetles

Forewings, called elytra, are hard
Chewing mouthparts, called mandibles
Undergo complete metamorphosis with larvae, pupal and adult stages

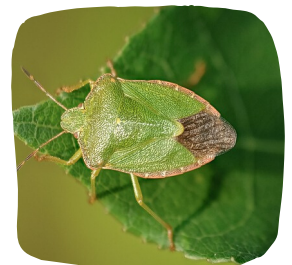
There are 4000 types of beetle in the UK



There are 2000 types of bug in the UK

Only half of forewing is hard
V-shape to their wings when viewed from above
Piercing-sucking mouthparts, a proboscis
Undergo incomplete metamorphosis

True bugs





Bees

Two pairs of wings, back pair sometimes hard to see
Short, thick bodies
Bumblebees are especially large and round
Tend to be 'hairy'



*There are 270 types of
bee in the UK*



*There are 9000 types of
wasp in the UK*

Two pairs of wings, back pair sometimes hard to see
Wasps will have a 'waist', between the abdomen and thorax
Thinner and longer bodies and legs than bees
Not very 'hairy'

There are lots of different wasps, not all sting



Wasps



Ants

Usually don't have wings, can find winged form in midsummer
Noticeable waists between the abdomen and thorax
Have clubbed or bent antennae
Not very 'hairy'



*There are 50 types of
ant in the UK*



Flies

Often look like wasps or bees
One pair of wings
Hindwings reduced to club-like halteres
Sucking, piercing or sponge-like mouthparts



Grasshoppers

Large hind legs that help them jump long distances
Usually a shade of brown or green
two sets of wings



*There are 35 types of
grasshopper in the UK*

Draw lots of different types of insect

