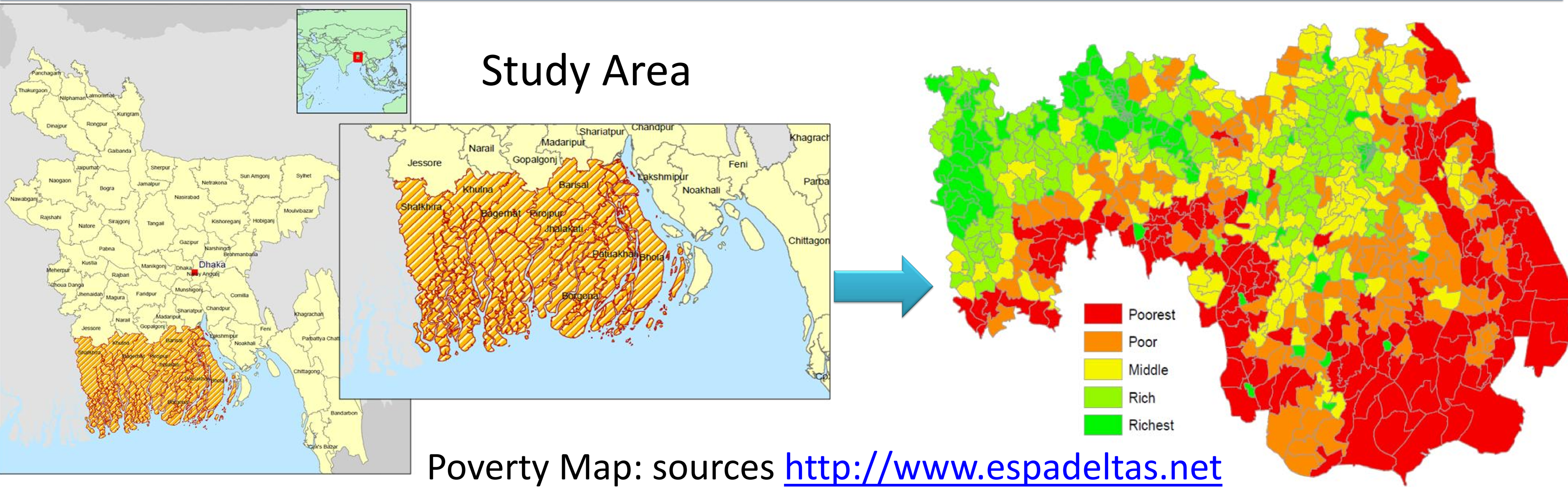


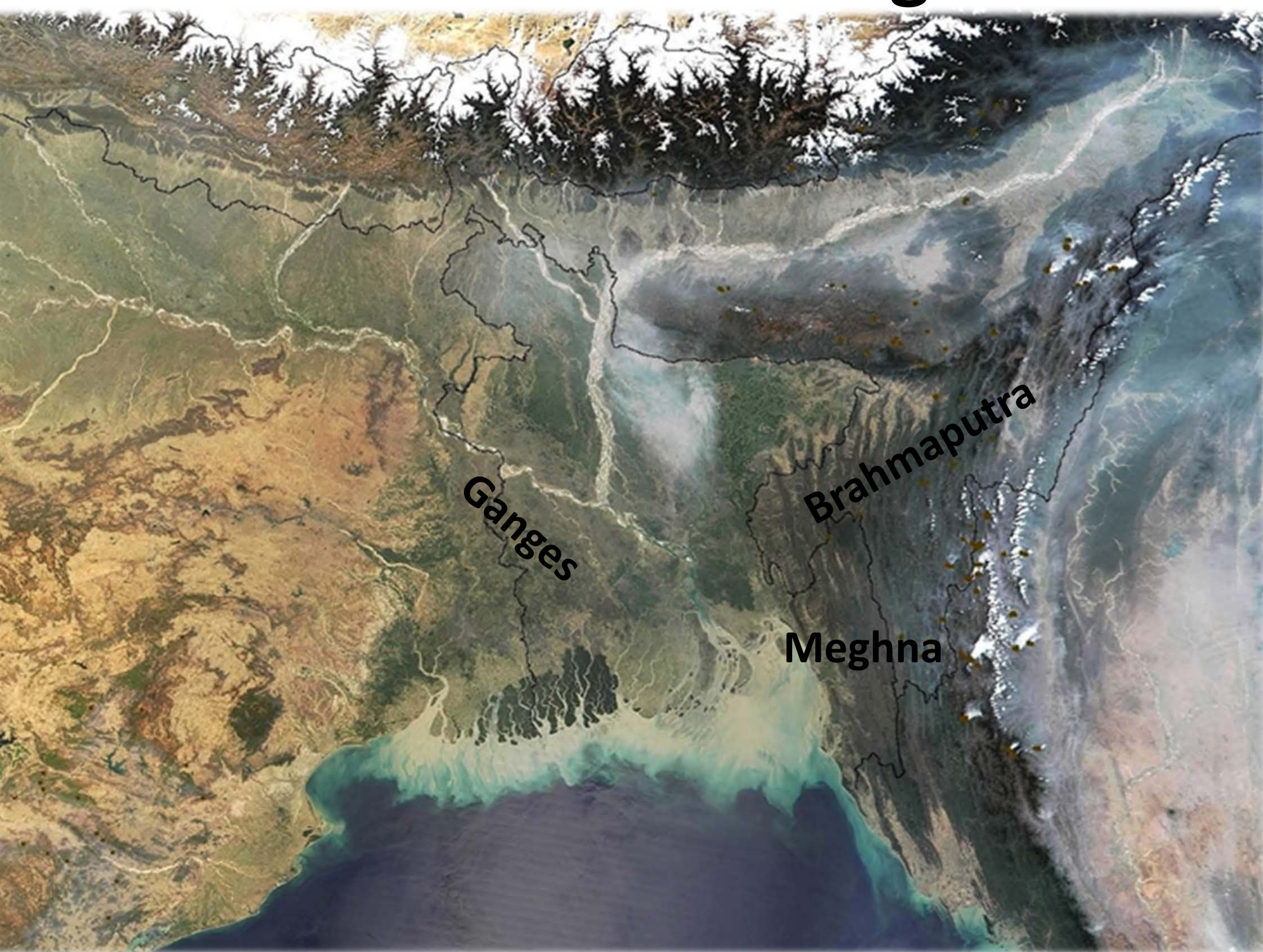
Social enterprise and innovation as a driver of community management in the Ganges Brahmaputra Meghna (GBM) Delta

Presented by : Qazi Waheed Uz Zaman

Supervisors: Dr. Vadim Grinevich, Dr. Craig Hutton, Prof. Sally Brailsford



To determine the potential for **social enterprise and innovation (SEI)** to enhance the **socio-environmental** decision making process at the community level in the coastal **GBM Delta of Bangladesh**

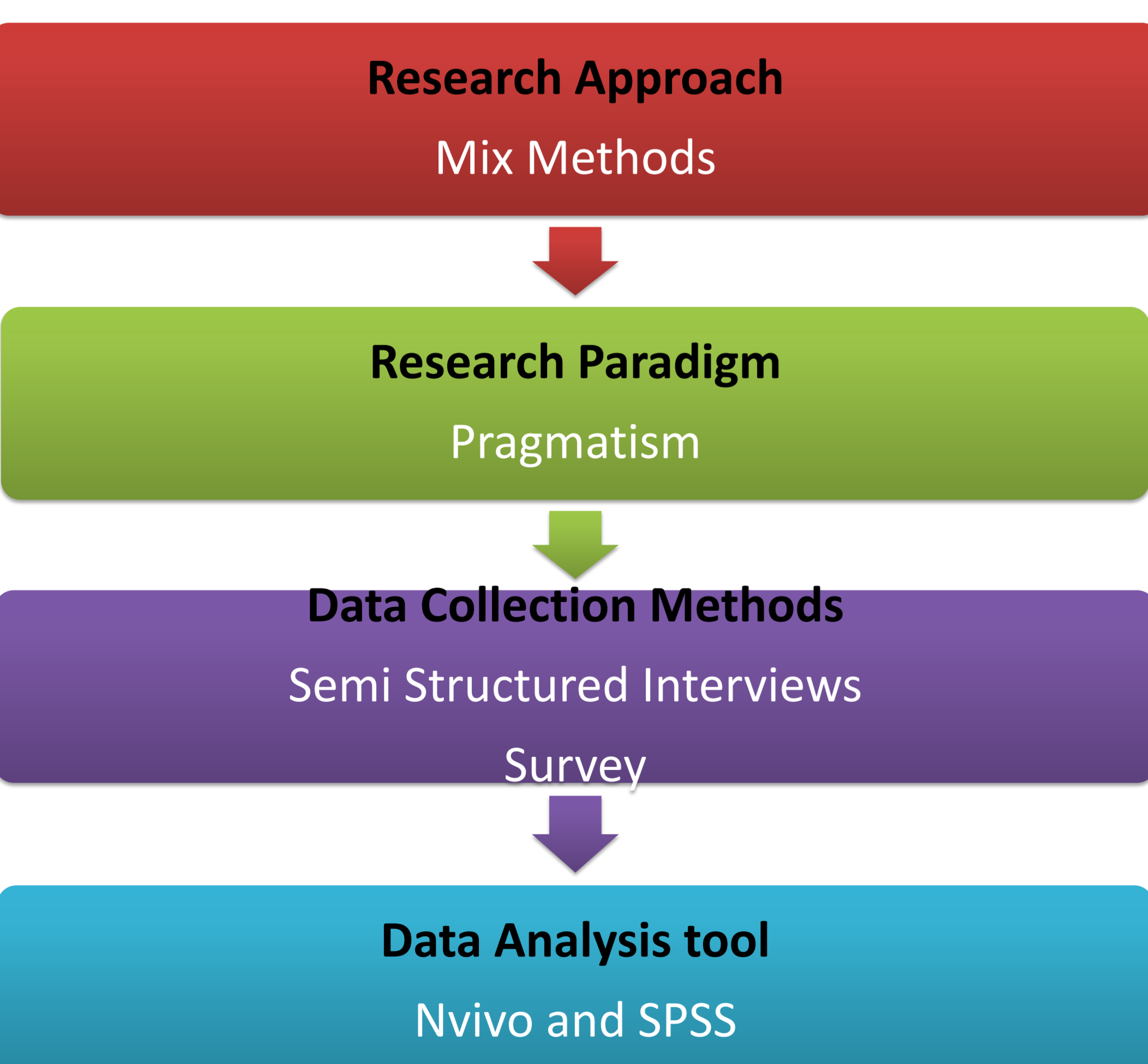


Objectives

- To characterise the socio-environmental characteristics of shrimping communities.
- To identify the modes of transition from rice to shrimp farming on coastal population of GBM Delta, Bangladesh.
- To demonstrate the potential role of SEI in optimising decision making process at a community level.



Methodology and Research Design



Conclusion

- ❑ To build a simulation model to test our policies and develop scenarios, before implementing them in the real world.
- ❑ To use the outcomes of the study to help decision makers in policy formulation, specifically effecting the livelihoods of people living on the southwest coastal region of Bangladesh

References

- 1) HUTTON,C. and JOHNSON,A.F. (2013, November 20th). *Developing a spatial statistical relationship between land use, ecosystem services and the household measure of poverty*. Presented at a ESPA Annual Science Conference 2013 Charles Darwin House, London .
- 2) Ahmed, N. (2013). Linking prawn and shrimp farming towards a green economy in Bangladesh: Confronting climate change. *Ocean & Coastal Management*, 75, 33-42
- 3) Images credit : www.espadeltas.net



DECCMA Poster Competition,
4th Consortium Workshop, Jan
2016

Acknowledgements: The researcher is funded by the Southampton Business School under the Vice-Chancellor's Scholarship award.

The author can be contacted at qz5e13@soton.ac.uk