

# Graphic Resources

# Lab 1 (Fingerprints) Sc9 and 10

For each room:

6 Inkpads

12 dusting brushes

12 sellotapes

Paper towels

Microscopes slides

Corn starch (6 pots)

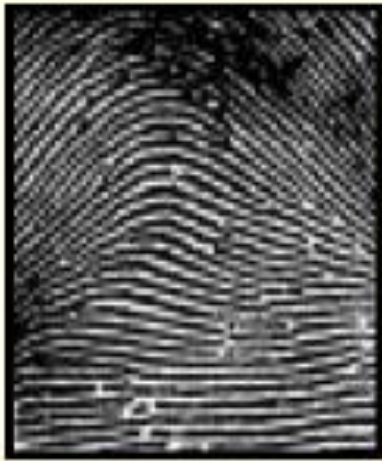
Talcum powder (6 pots)

Charcoal (6 pots)

12 laminated fingerprint pattern sheets

6 doorknobs with thumb print.

Hand lenses x 12



**Plain Arch**



**Tented Arch**



**Ulnar Loop**



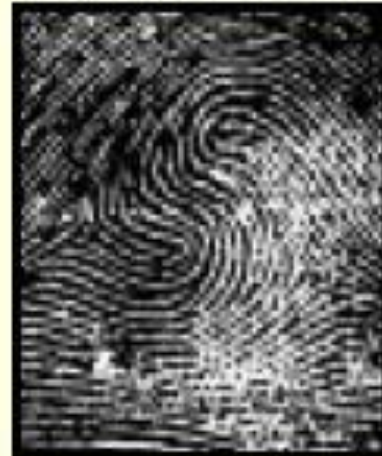
**Radial Loop**



**Plain Whorl**



**Central Pocket  
Loop**



**Double Loop  
Whorl**



**Accidental  
Whorl**



Left  
Thumb



Right  
Thumb



**SUSPECT E**





**Left  
Thumb**



**Right  
Thumb**



**SUSPECT A**



**Left  
Thumb**



**Right  
Thumb**



**SUSPECT H**





Left  
Thumb



Right  
Thumb



**SUSPECT F**



## Forensic Evidence Assessment Sheet - Fingerprints

Left  
Thumb



Right  
Thumb



**SUSPECT \*\*\*\***





**Left  
Thumb**



**Right  
Thumb**



**SUSPECT B**



Left  
Thumb



Right  
Thumb



**SUSPECT D**





Left  
Thumb



SUSPECT C

Right  
Thumb







**Left  
Thumb**

**Right  
Thumb**



**SUSPECT G**

# Lab 2 (Hair Analysis)

12 microscopes

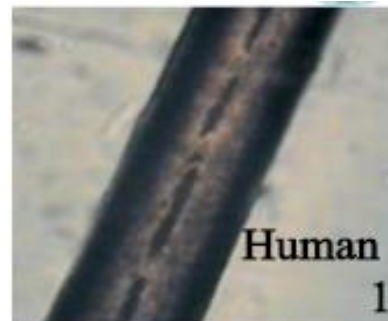
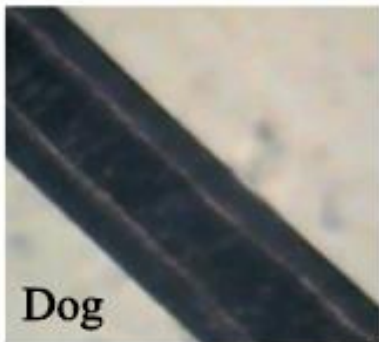
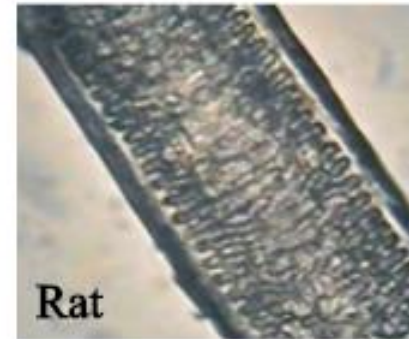
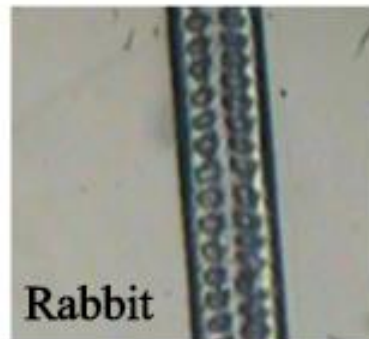
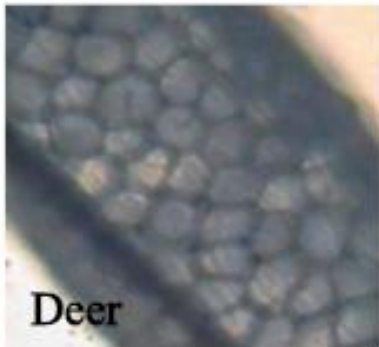
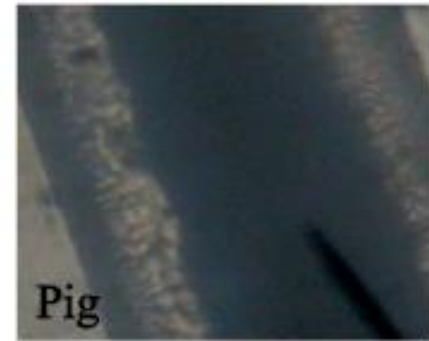
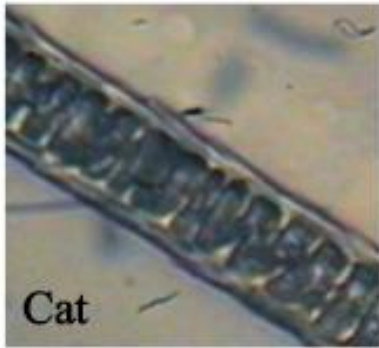
Slides labelled 1-3 (6 sets)

Microscope slides

Sellotape x 6

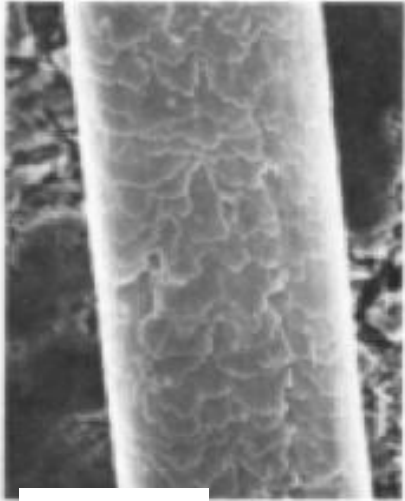
Laminated identification sheets x 6

# Animal Hair identification Sheet

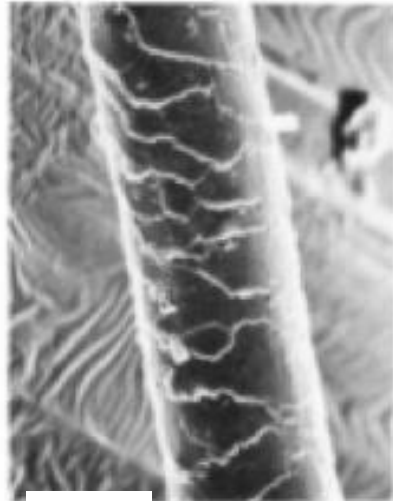




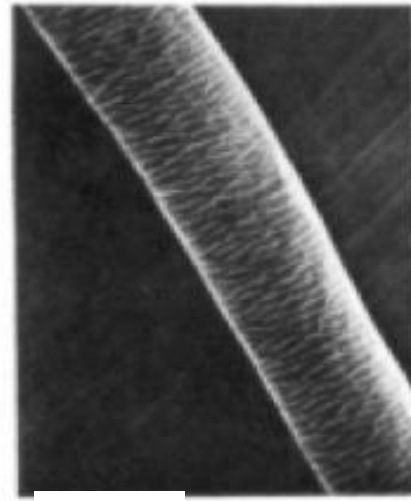
# Animal Hair identification Sheet Electron Microscope



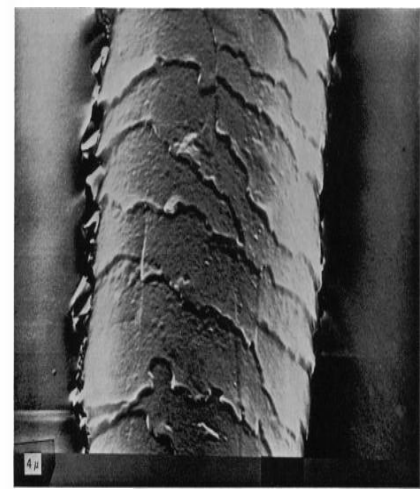
Human



Dog



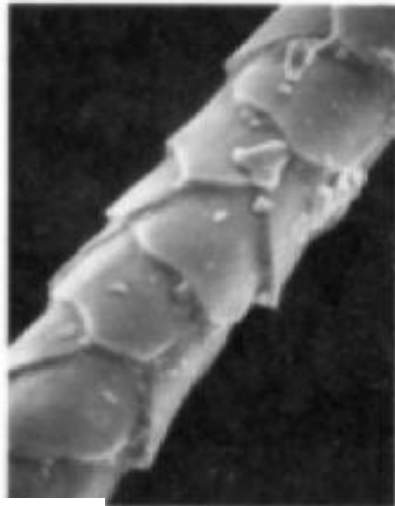
Deer



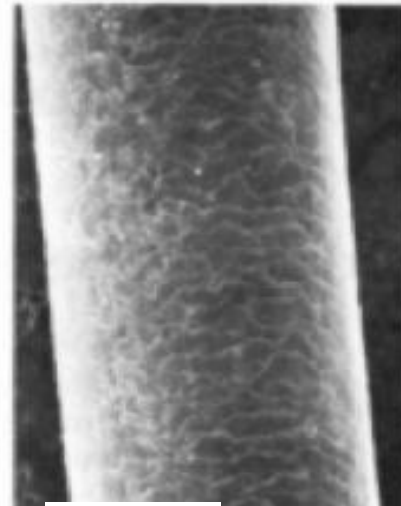
Rat



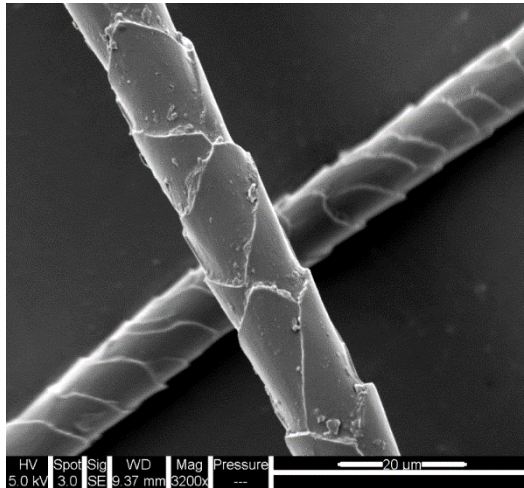
Rabbit



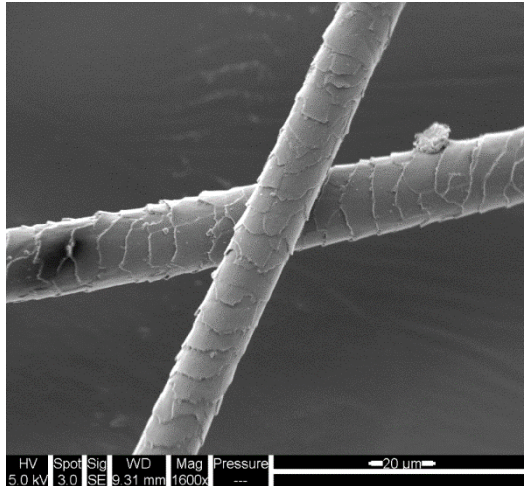
Cat



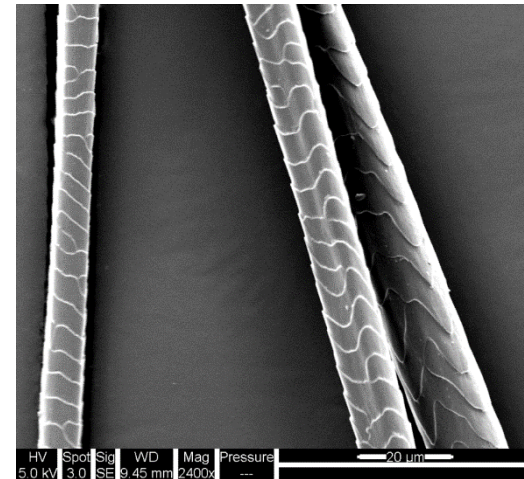
Horse



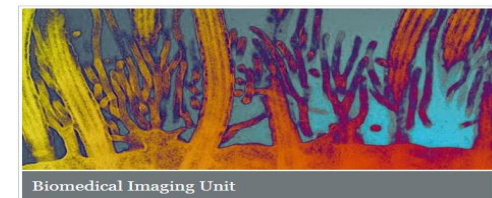
Sample 1



Sample 2



Sample 3



Remember the door code is 1657 577.

# Lab 3 (Document Analysis)

Suspect	Sample
A	Remember the door code is 1657
B	Remember the door code is 1657
C	Remember the door code is 1657
D	Remember the door code is 1657
E	Remember the door code is 1657.
F	Remember the door code is 1657.
G	Remember the door code is 1657
H	Remember the door code is 1657

Ava

Clair

Claire

Gordon

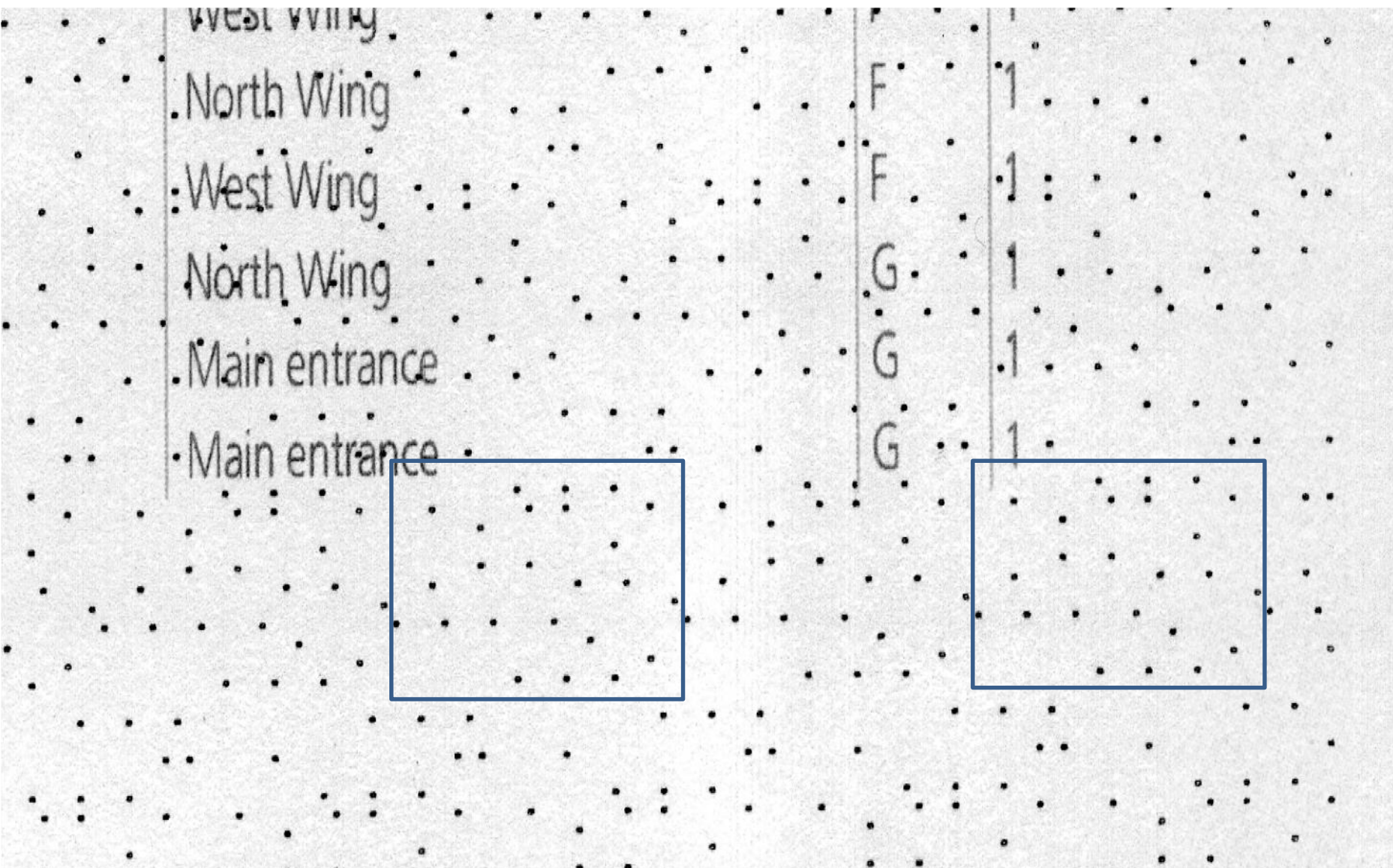
Gemma

Ian

Jon M

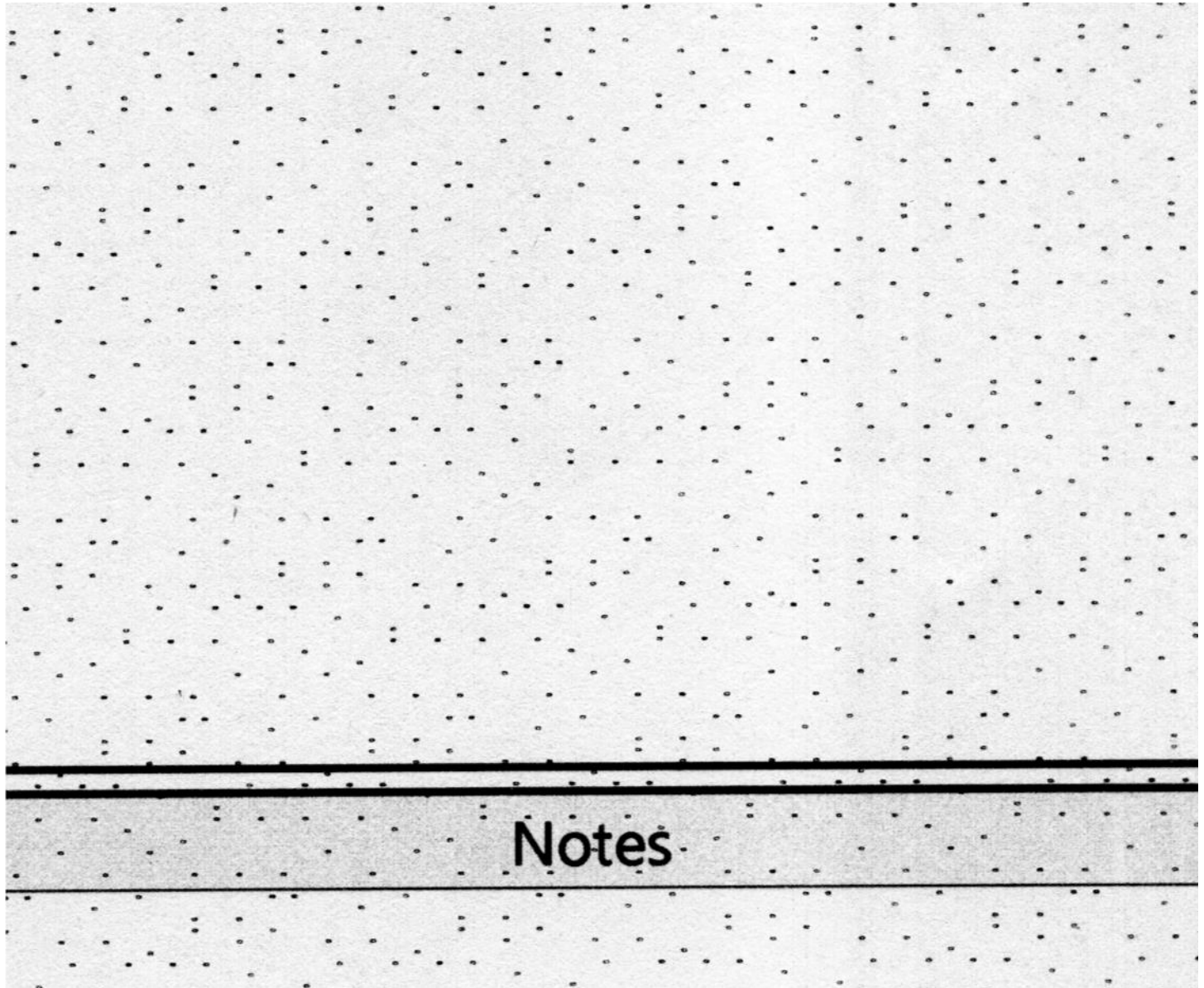
Victoria





Crime Scene Map

# LF57



**AB74**

# **Forensic Crime Scene Science**

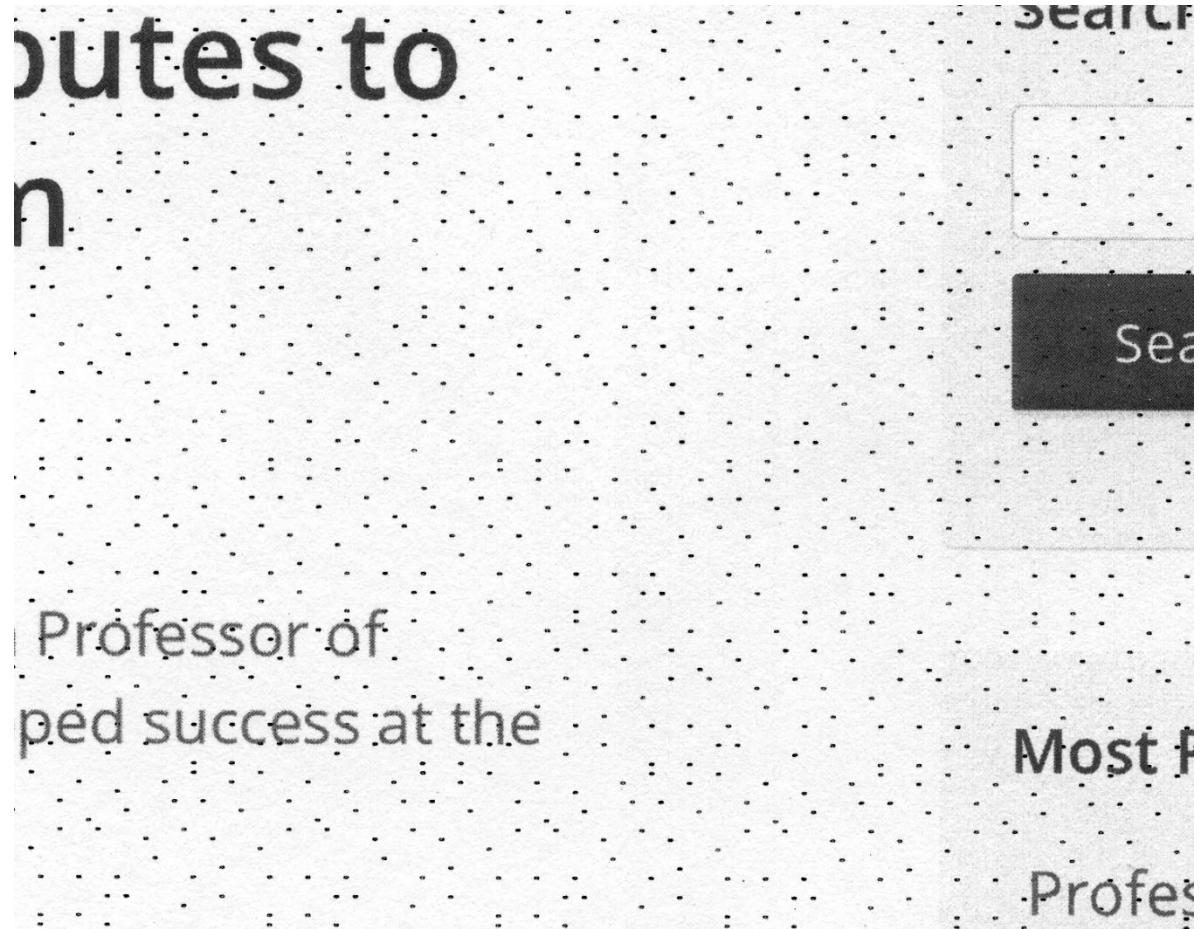


# LB62

## **Contact details**

University Hospital Southampton NHS Foundation Trust  
Tremona Road

LB72



# Lab 4 (Ballistic Analysis)

## **Equipment required:**

Examples of clothing from the suspects

Each group:

Sample tubes labelled A-H and each containing cotton buds.

(dirty the buds by placing in a plastic bag with a little charcoal and shaking)

Positive samples need to be impregnated with Potassium Nitrate: A, C, D, E, F and G

Negative samples: B and H

Beakers to place each sample set in.

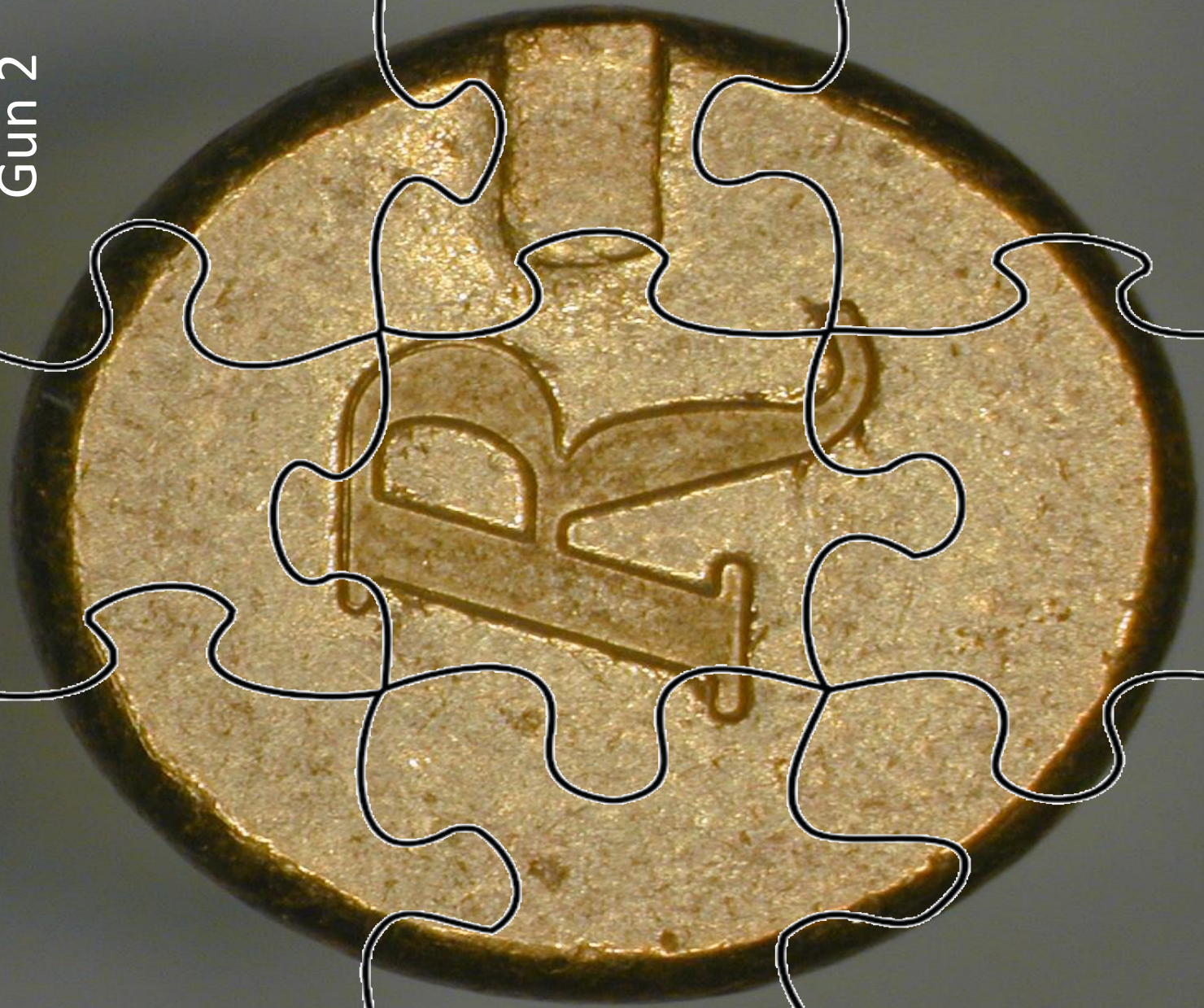
Lead Nitrate dropper bottles (one per group)

Jigsaw puzzles of each casing

Laminated picture of casing found at the crime scene

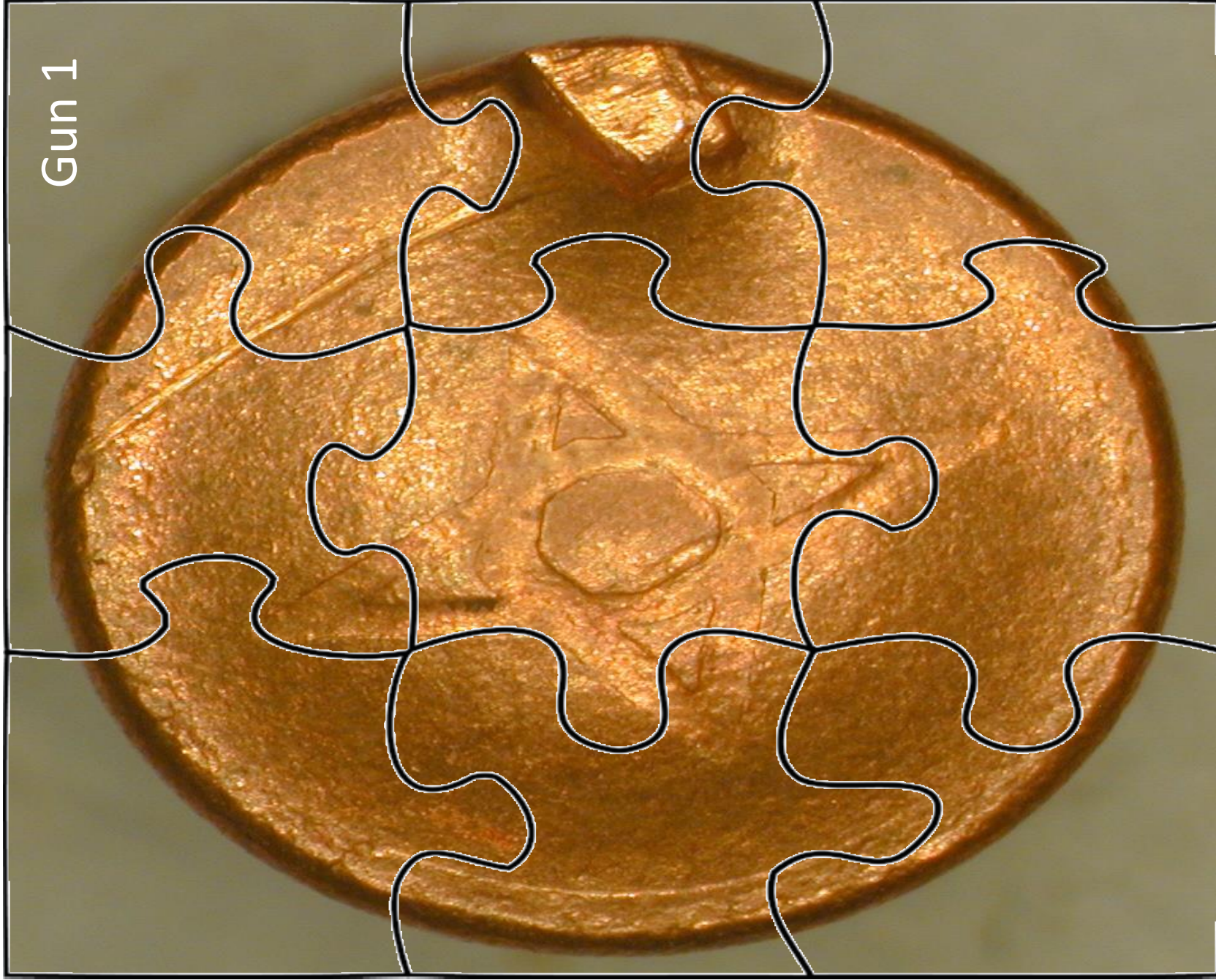


Gun 2



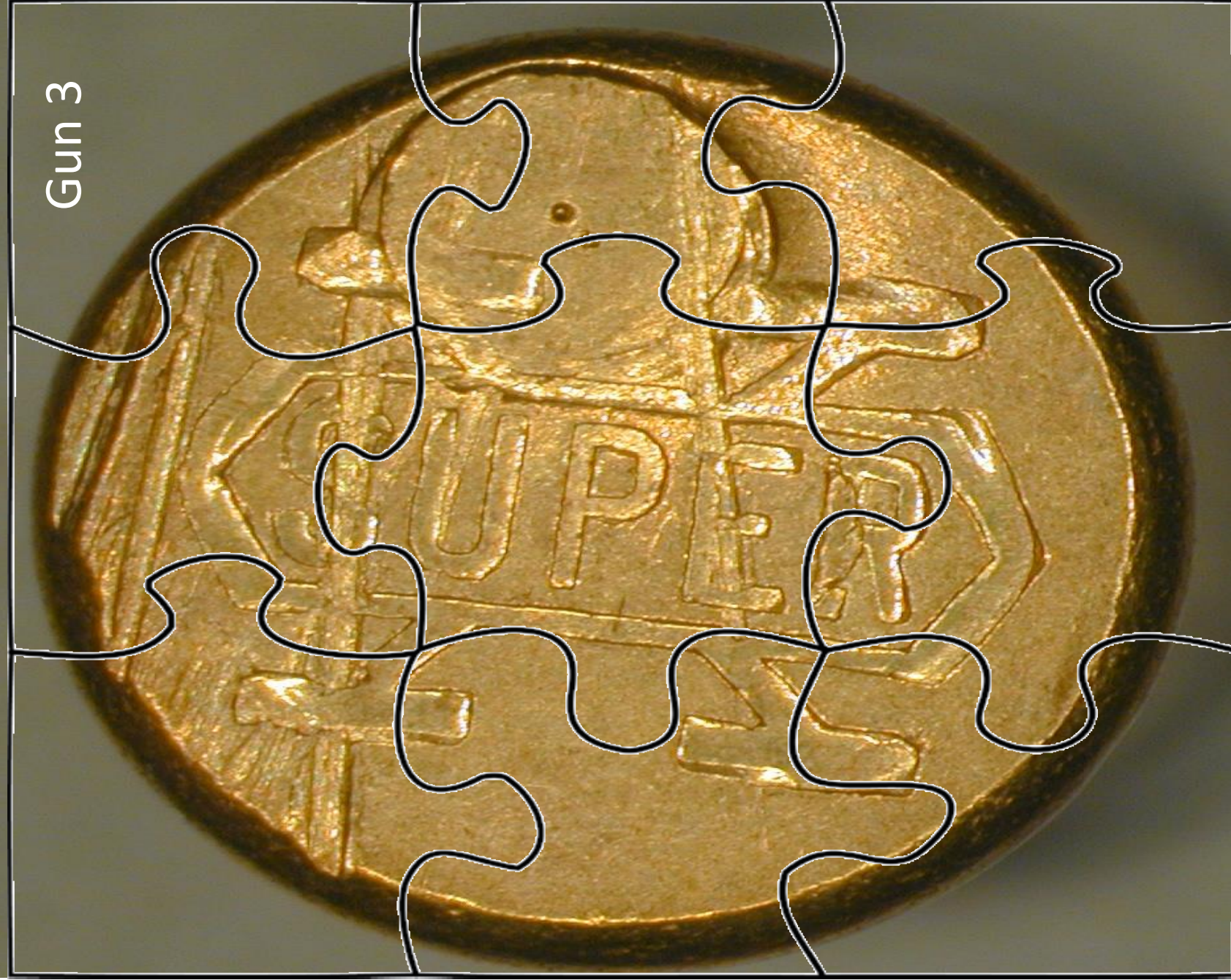


Gun 1





Gun 3





Crime Scene Spent Cartridge

