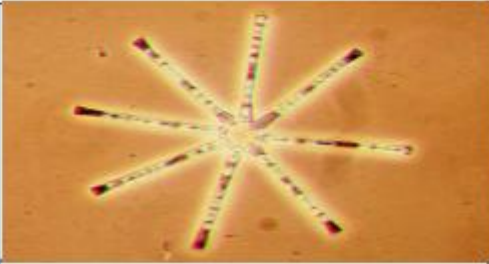


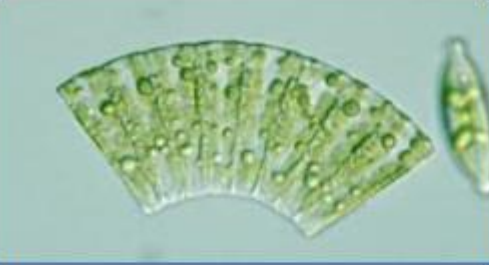
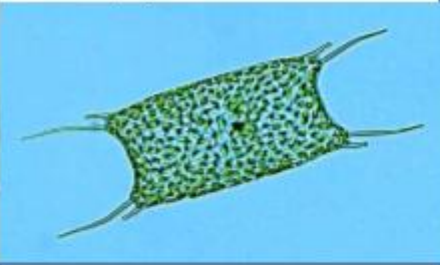
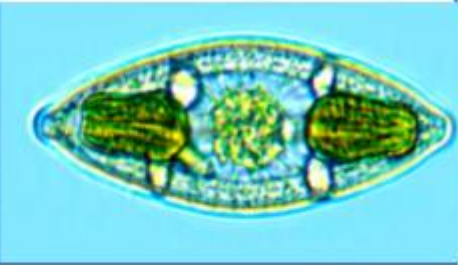

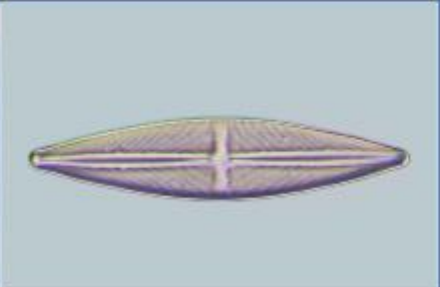

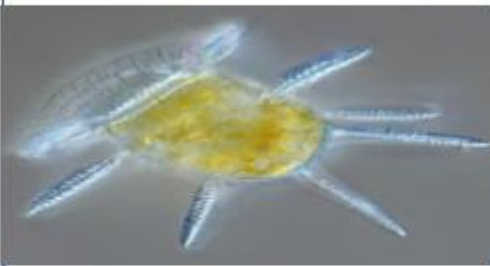


# Phytoplankton Identification

<b>Diatoms</b>		
		
Asterionella	Actinopterychus	Fragilaria
		
Meridion	Odontella	Parlibellus
		
Psammodictyon	Stauroneis	Tabellaria

# Phytoplankton Identification

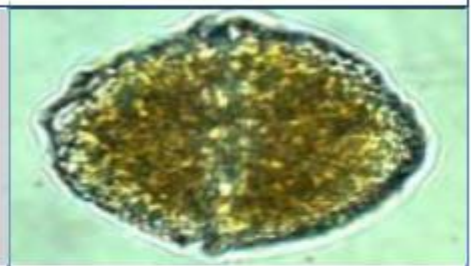
## Dinoflagelates



Ceratochoris



Gambierdiscus



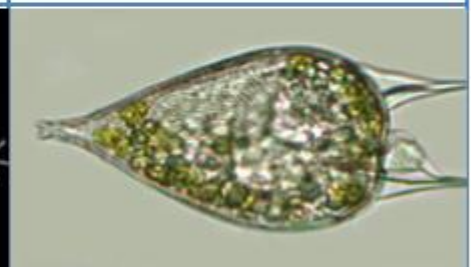
Lingulodinium



Ornithocercus



Plagodinium



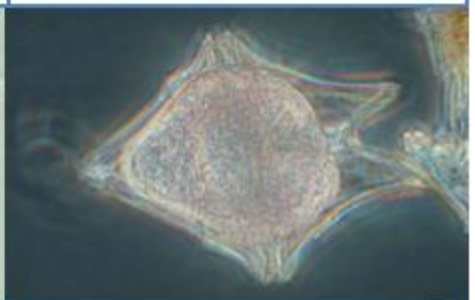
Podolampas



Prorocentrum

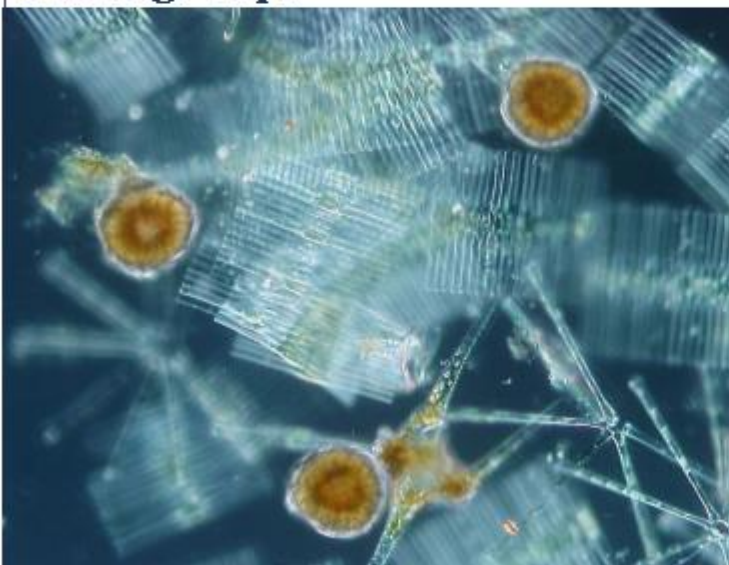


Protoceratium

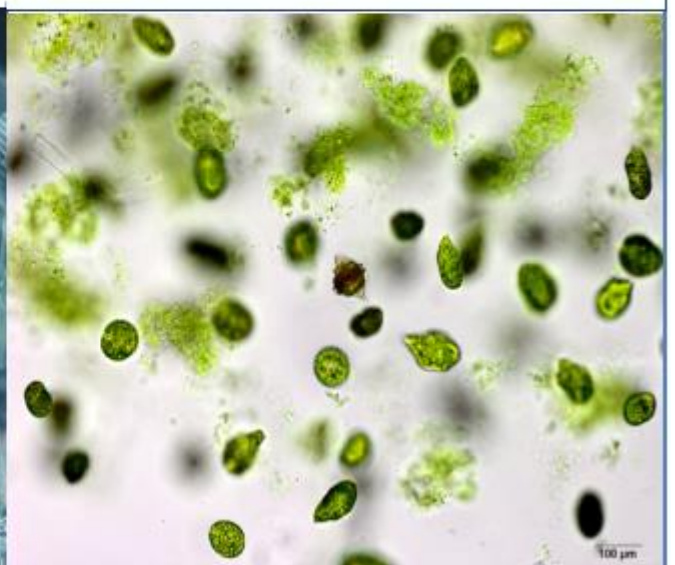


Protoperidinium

## Other groups



Brown Algae



Cyanobacteria